

## GAS GROUP IIC

# GUB.. Series - Copper free aluminium or Stainless steel AISI 316 L



GUB.. series enclosures offers Ex d IIC mode of protection.

They are suitable for hazardous areas of industrial plants for indoor and outdoor applications.

GUB.. QL version can be equipped with following components:

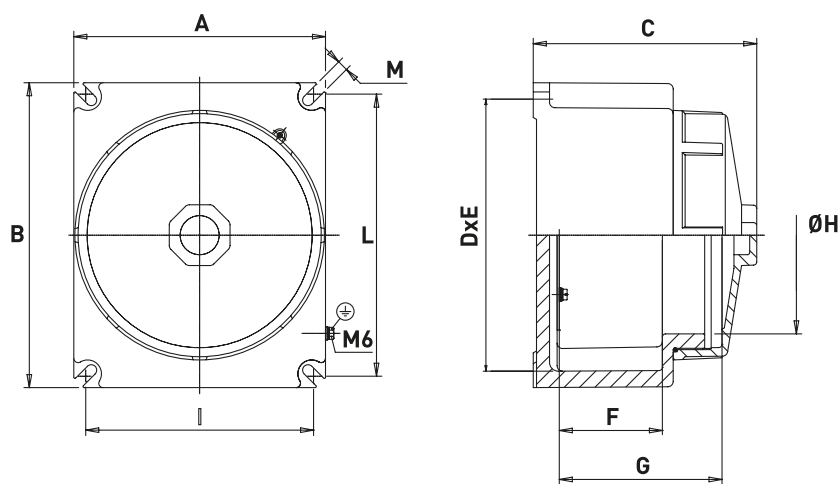
- Push buttons and mechanical operators PL.. Series;
- Rotating switches PSRC Series;
- Signalling lamps PL.. Series;
- Potentiometers;
- Rotating handles SRC-1 or SRC-10;
- Measurement instruments;
- Electric and electronic equipment;
- Windows made of tempered glass (EMH version).

They can be used in different applications such as push button stations, instrument housing, lighting distribution panels, power distribution panels, heat tracing panels, motor protection, etc.

## TECHNICAL FEATURES

<b>Material</b>	Copper-free aluminium Stainless steel AISI 316 L (upon request) The sides A,B & C can be increased/decrease of 10%	
<b>IP rating</b>	IP66	
<b>Ambient temperature range</b>	-50°C to +55°C (ATEX) -60°C to +60°C (IECEX)	
<b>Approvals</b>	<u>Full conformity certificate:</u> ATEX: 00ATEX0033X IECEX: BKI 15.0003 EAC: RU C-IT.BH02.B.00588/20	<u>Component certificate:</u> ATEX: IMQ 09 ATEX 018U IECEX: IECEX INE 09.0016U EAC: RU C-IT.BH02.B.00588/20
<b>Marking</b>	II 2 GD Ex d IIC T(*) Gb Ex tb IIIC T(*) Db IP66 * T6/T85°C, T5/T100°C, T4/T135°C  II 2(1) GD Ex d [ia Ga] IIC T6 Gb Ex tb [ia Da] IIIC T85°C Db IP66  II 2(2) GD Ex d [ib] IIC T6 Gb Ex tb [ib] IIIC T85°C Db IP66	
<b>Surface treatment</b>	Polyurethane painting cycle - Blue colour RAL5014 (other colour available upon request)	
<b>Entries</b>	Metric pitch 1.5, ANSI B1.20.1 NPT	
<b>Standard certificate label</b>	Made by self adhesive UV and corrosion resistant polyester, approved by certified Laboratory.	
<b>Optional accessories</b>	Drain/breather valve Internal anticondensate painting Traffolyte/Stainless steel certificate label Stainless steel construction	

## Dimensions GUB..



## GUB Series enclosures c/w internal mounting plate - Copper-free aluminium - Standard versions\*

TYPE	CODE	DIMENSIONS [mm]											WEIGHT [Kg]
		A	B	C	D	E	F	G	ØH	I	L	M	
GUB-01	B011024010029	169	169	152	139	139	62	105	125	150	150	7	3.60
GUB-02	B011024010030	190	190	164	160	160	63	113	144	170	170	8	4.70
GUB-03	B011024010031	210	210	179	180	180	78	127	167	190	190	8	6.00
GUB-04	B011024010032	232	281	206	202	251	97	152	183	210	260	8	8.90
GUB-05	B011024010033	257	298	222	227	268	106	163	206	235	275	8	11.90
GUB-06	B011024010034	295	330	248	259	295	140	203	242	270	305	10	15.80

\*Standard enclosures are supplied painted - painting cycle: C4 - Colour: Blue RAL5014

For complete junction boxes, ask to the Sales Office.

Note: For installations in either Zone 1 or in the presence of Group IIC gases, barrier glands are required. Please refer to EN-60079-14.

## Maximum number of entries on sides A/B

TYPE	GUB-01	GUB-02	GUB-03	GUB-04	GUB-05	GUB-06
M20/1/2"	3/3	5/5	5/5	5/7	7/9	7/9
M25/3/4"	3/3	5/5	5/5	5/7	7/9	7/9
M32/1"	2/2	3/3	3/3	5/5	5/7	5/7
M50/1" 1/2	1/1	1/1	2/2	2/3	2/3	3/5
M63/2"	1/1	1/1	1/1	2/2	2/2	2/3
M75/2" 1/2	-	-	-	1/2	1/2	2/2
M80/3"	-	-	-	1/1	1/2	1/2